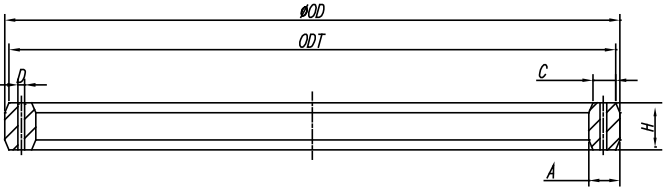


SEALING RING

密封垫环 (BX型钢垫圈)
Sealing ring (Type BX ring gaskets)



八角形 BX型 BX



实体图

示意图

BX型钢垫圈/Type BX ring gaskets

可选材质

- 碳钢AISI4130, 410,SS316,SS304
- 不锈钢C271
- 其他特殊合金

Available materials:

- Carbon AISI4130,410,SS316,SS304
- Stainless steel C271
- Other special alloys

注 意

- 圆角半径R是垫片厚H的8%~12%。
- 垫片中心线需要一个压力通孔。
- a.倒角位于槽内上
- b.只要垫圈宽度或高度的变化不超过0.10mm，
- 整个圆角上A加上公差0.20mm，
- 对宽度A和高度H是允许的

NOTE:

- The fillet radius R is 8%~12% of the gasket thickness H.
- A pressure hole is required at the center line of the gasket.
- a. The chamfer is located inside the groove
- b. As long as the change in the width or height of the gasket
- does not exceed 0.10mm,A plus a tolerance of 0.20mm on
- the entire fillet,width A and height H are allowed

特 点

- 耐高温, 耐高压, 适用于高压法兰；
- 密封持久可靠；
- 适应压力, 温度有波动的工况条件；

Characteristics :

- high temperature resistant, resistant to high pressure, suitable for high pressure flange;
- reliable sealing persistent;
- to adapt to the working conditions of pressure and temperature fluctuations;

code	P	OD	H	A	ODT	C	D	E	G	N
BX150	43	72.19	9.30	9.30	70.87	7.98	1.6	5.56	73.48	11.43
BX151	46	76.40	9.63	9.63	75.03	8.26	1.6	5.56	77.77	11.84
BX152	52	84.68	10.24	10.24	83.24	8.79	1.6	5.95	86.23	12.65
BX153	65	100.94	11.38	11.38	99.31	9.78	1.6	6.75	102.77	14.07
BX154	78	116.84	12.40	12.40	115.09	10.64	1.6	7.54	119.00	15.39

BX155	103	147.96	14.22	14.22	145.95	12.22	1.6	8.33	150.62	17.73
BX156	179	237.92	18.62	18.62	235.28	15.98	3.2	11.11	241.83	23.39
BX157	228	294.46	20.98	20.98	291.49	18.01	3.2	12.70	299.06	26.39
BX158	279	352.04	23.14	23.14	348.77	19.86	3.2	14.29	357.23	29.18
BX159	346	426.72	25.70	25.70	423.09	22.07	3.2	15.88	432.64	32.49

BX160	346	402.59	23.83	13.74	399.21	10.36	3.2	14.29	408.00	19.96
BX161	425	491.11	28.07	16.21	487.45	12.24	3.2	17.07	497.94	23.62
BX162	425	475.49	14.22	14.22	473.48	12.22	1.6	8.33	478.33	17.91
BX163	476	556.16	30.10	17.37	551.89	13.11	3.2	18.26	563.50	25.55
BX164	476	570.56	30.10	24.59	566.29	20.32	3.2	19.05	577.90	32.77

BX165	540	624.71	32.03	18.49	620.19	13.97	3.2	19.05	632.56	27.20
BX166	540	640.03	32.03	26.14	635.51	21.62	3.2	19.05	647.88	34.87
BX167	680	759.36	35.87	13.11	754.28	8.03	1.6	21.43	768.33	22.91
BX168	680	765.25	35.87	16.05	760.17	10.97	1.6	21.43	774.22	25.86
BX169	130	173.51	15.85	12.93	171.27	10.69	1.6	9.53	176.66	16.92

BX170	228	218.03	14.22	14.22	216.03	12.22	1.6	8.33	220.88	17.91
BX171	279	267.44	14.22	14.22	265.43	12.22	1.6	8.33	270.28	17.91
BX172	346	333.07	14.22	14.22	331.06	12.22	1.6	8.33	335.92	17.91
BX303	762	852.75	37.95	16.97	847.37	11.61	1.6	22.62	862.30	27.38