

GMV系列

隔膜阀

GMV series diaphragm valve

功能简介

GMV系列是隔膜阀应对实验室标准工况, 实现对流体的关断和切换功能; 阀门设计紧凑, 在高压和低压环境中均表现出可靠性能, 无死区的填料设计避免了流体介质残留, 保证分析测试不受影响, 保证阀门长寿命工作, 长寿命、低扭矩、快速关断是隔膜阀能广泛应用于实验仪器的基本要素。

Functional Introduction

GMV series is a diaphragm valve that can handle standard laboratory working conditions and realize the shutoff and switching functions of the fluid. The valve is compactly designed and exhibits reliable performance in both high-pressure and low-pressure environments. The packing design without dead zones avoids the residual fluid medium, ensuring that the analysis and testing are not affected and the valve has a long service life. Long life, low torque and fast shutoff are the basic elements that make diaphragm valves widely used in experimental instruments.

性能特点

- 用于对流体管路的快速截断或切换;
- 最高工作压力3000psig(207bar);
- 工作温度-20℃~200℃;
- 不锈钢材质适用于腐蚀性气体;
- 适用于氧气;
- 广泛应用于多种流体系统领域;
- 提供标准1/4"NPT内螺纹接口;

Performance features

- Used for quick cutoff or switching of fluid pipelines;
- Maximum working pressure 3000psig (207bar);
- Working temperature -20℃~200℃;
- Stainless steel material is suitable for corrosive gases;
- Applicable to oxygen;
- Widely used in various fluid system fields;
- Provide standard 1/4" NPT internal thread interface;

产品应用

- 组件测试;
- 实验分析、在线分析;
- 石油化工;
- 高压取样;
- 成套设备;

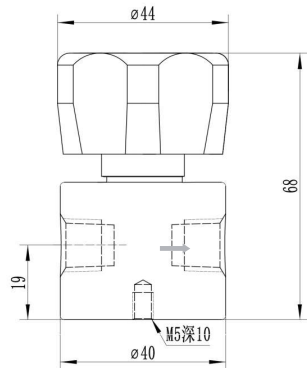
Product application

- Component testing;
- Experimental analysis, online analysis;
- Petrochemical;
- High-pressure sampling;
- Complete equipment;

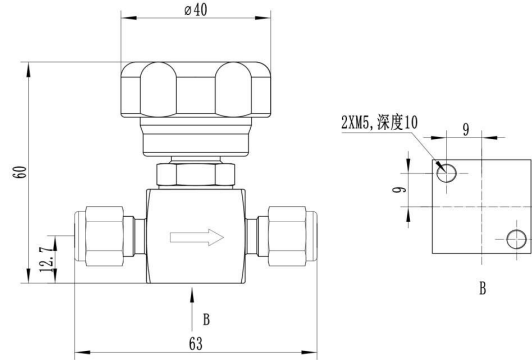
零件材料/Parts material

| 零件/Parts | 材料/Material |
|---------------|-------------|
| 手柄/Handle | 铝合金 |
| 顶丝/Top screw | 304SS |
| 连接头/Connector | 316SS |
| 膜片/Diaphragm | 316SS |
| 阀杆/Valve stem | 316SS |
| 阀体/Valve body | 316SS |
| 密封座/Seal seat | PEEK |
| 丝杆/Screw | 黄铜 |

安装尺寸/Installation Dimensions



GMV-B



GMV-A

选型指南/Selection Guide

| HF | | - | GMV | | - | B | | - | 2 | | - | K4F | | - | 2 | | - | M | |
|------|---------|-------|-----|------|-----|------|------|---------|-----|------|------|-----|-----------|----|---|-----------|---|-----------|--|
| 阀门材料 | | 隔膜阀大类 | | 针阀分类 | | 阀杆类型 | | 入口/出口尺寸 | | 阀体型式 | | 温度 | | | | | | | |
| 分类 | | | | | | | | | | | | | | | | | | | |
| 标识 | 材料 | | | A | 方体式 | 标识 | 类型 | 6mm | K6 | 标识 | 阀体型式 | 标识 | 温度 | | | | | | |
| SS | 316L不锈钢 | | | B | 圆体式 | 1 | 软座密封 | 12mm | K12 | 2 | 两口阀体 | 无 | 常温 (200℃) | | | | | | |
| | | | | | | 2 | | 硬座密封 | | 3 | | 三口 | | M | | 中温 (350℃) | | | |
| | | | | | | | | 3/8in. | | K6F | | 4 | | 四口 | | H | | 高温 (600℃) | |
| | | | | | | | | 1/2in. | | K8F | | | | | | | | | |
| | | | | | | | | 1/4NPT | | NN4 | | | | | | | | | |
| | | | | | | | | | | | | | | | | | | | |
| | | | | | | | | | | | | | | | | | | | |
| | | | | | | | | | | | | | | | | | | | |
| | | | | | | | | | | | | | | | | | | | |
| | | | | | | | | | | | | | | | | | | | |
| | | | | | | | | | | | | | | | | | | | |
| | | | | | | | | | | | | | | | | | | | |
| | | | | | | | | | | | | | | | | | | | |
| | | | | | | | | | | | | | | | | | | | |
| | | | | | | | | | | | | | | | | | | | |
| | | | | | | | | | | | | | | | | | | | |
| | | | | | | | | | | | | | | | | | | | |
| | | | | | | | | | | | | | | | | | | | |
| | | | | | | | | | | | | | | | | | | | |
| | | | | | | | | | | | | | | | | | | | |
| | | | | | | | | | | | | | | | | | | | |
| | | | | | | | | | | | | | | | | | | | |
| | | | | | | | | | | | | | | | | | | | |
| | | | | | | | | | | | | | | | | | | | |
| | | | | | | | | | | | | | | | | | | | |
| | | | | | | | | | | | | | | | | | | | |
| | | | | | | | | | | | | | | | | | | | |
| | | | | | | | | | | | | | | | | | | | |
| | | | | | | | | | | | | | | | | | | | |
| | | | | | | | | | | | | | | | | | | | |
| | | | | | | | | | | | | | | | | | | | |
| | | | | | | | | | | | | | | | | | | | |
| | | | | | | | | | | | | | | | | | | | |
| | | | | | | | | | | | | | | | | | | | |
| | | | | | | | | | | | | | | | | | | | |
| | | | | | | | | | | | | | | | | | | | |
| | | | | | | | | | | | | | | | | | | | |
| | | | | | | | | | | | | | | | | | | | |
| | | | | | | | | | | | | | | | | | | | |
| | | | | | | | | | | | | | | | | | | | |
| | | | | | | | | | | | | | | | | | | | |
| | | | | | | | | | | | | | | | | | | | |
| | | | | | | | | | | | | | | | | | | | |
| | | | | | | | | | | | | | | | | | | | |
| | | | | | | | | | | | | | | | | | | | |
| | | | | | | | | | | | | | | | | | | | |
| | | | | | | | | | | | | | | | | | | | |
| | | | | | | | | | | | | | | | | | | | |
| | | | | | | | | | | | | | | | | | | | |
| | | | | | | | | | | | | | | | | | | | |
| | | | | | | | | | | | | | | | | | | | |
| | | | | | | | | | | | | | | | | | | | |
| | | | | | | | | | | | | | | | | | | | |
| | | | | | | | | | | | | | | | | | | | |
| | | | | | | | | | | | | | | | | | | | |
| | | | | | | | | | | | | | | | | | | | |
| | | | | | | | | | | | | | | | | | | | |
| | | | | | | | | | | | | | | | | | | | |
| | | | | | | | | | | | | | | | | | | | |
| | | | | | | | | | | | | | | | | | | | |
| | | | | | | | | | | | | | | | | | | | |
| | | | | | | | | | | | | | | | | | | | |
| | | | | | | | | | | | | | | | | | | | |

测试/Test

阀门出厂前均经过氮气检漏, 阀座漏率不超过0.1std·cm³/min。

All valves are leak tested with nitrogen before leaving the factory, and the valve seat leakage rate does not exceed 0.1std·cm³/min.

应用及安全/Application and security

- 隔膜阀禁止超压使用;
- 顺时针调节关闭, 逆时针调节开启;
- 隔膜阀有反向截止现象, 实属正常;
- 注意阀体底部指示流体方向的箭头, 请勿使流体反向通过;
- 请勿将隔膜阀当调节阀使用;
- Diaphragm valves are prohibited from being used under overpressure;
- Clockwise adjustment closes, counterclockwise adjustment opens;
- It is normal for diaphragm valves to have reverse cutoff;
- Pay attention to the arrow indicating the direction of the fluid at the bottom of the valve body, and do not allow the fluid to pass in the reverse direction;
- Do not use the diaphragm valve as a regulating valve;

禁忌!/Prohibited!

- 用户在选型时需谨慎考虑材料兼容性、应用环境及产品参数等细节;
- 产品是否适用, 安装、操作、维护是否安全便利, 生产厂家和用户需各自承担相应的责任;
- 错误的选型、安装和使用可能会造成财产损失, 甚至危及人身安全。
- When selecting a product, users should carefully consider details such as material compatibility, application environment, and product parameters;
- Whether the product is applicable, and whether the installation, operation, and maintenance are safe and convenient, the manufacturer and the user shall each bear the corresponding responsibilities;
- Wrong selection, installation, and use may cause property loss and even endanger personal safety.

本册产品有未列出的规格和参数, 详情请咨询我们的销售工程师。

The products in this catalog have specifications and parameters not listed in this catalog.
Please consult our sales engineers for details.